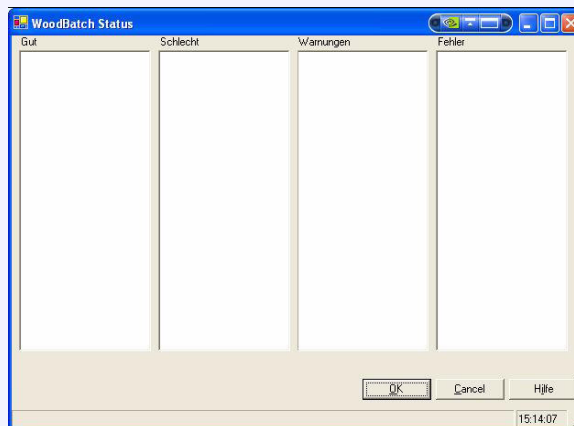
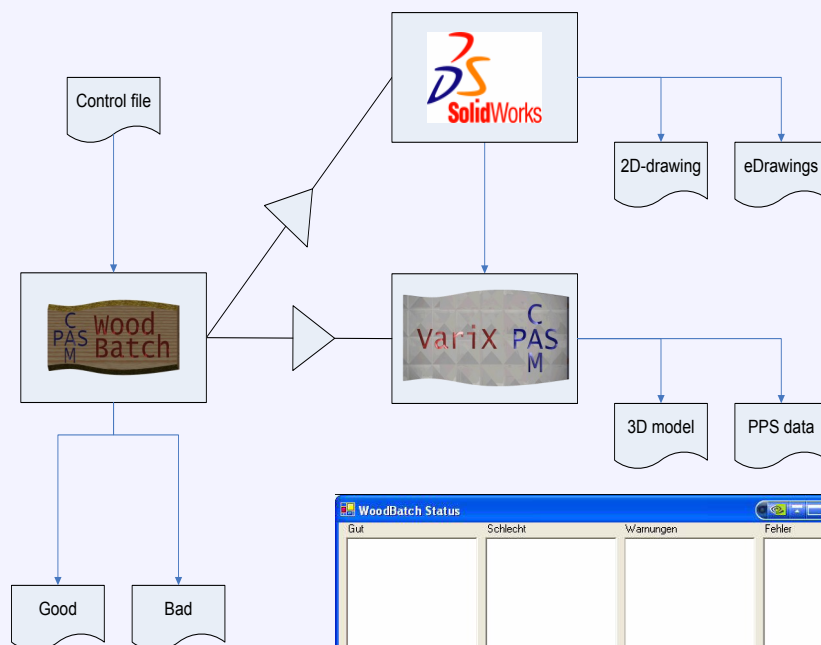


# PASCAM WoodBatch



## The XML controlled automation of SolidWorks® and the PASCAM software family

**PASCAM WoodBatch** is a smart Add-On to the 3D-CAD-system SolidWorks® and the software package VariXPASCAM or **PASCAM WoodWorks** and **PASCAM Bea** for the unattended, automatic remote control of SolidWorks® processes.



### Your benefits:

- Fully automatic, timer controlled generation of SolidWorks® models based on data of external systems (i.e. PPS or ERP systems)
- Optional changing of dimensions, file properties, modifications/ processings (with dimensional modifications), connections and mates
- Automatic generation of CNC data and saving of the generated model
- Future-proof software investment, based on standard XML file format

PASCAM Ralph Müller ■ Danziger Str. 16 ■ D-74366 Kirchheim/N. ■ Germany  
Phone: +49 (7143)961327 ■ Fax: +49 (7143)961328 ■ e-Mail: info@pascam.de

**woodbatch.pascam.de**

## Unattended remote control of SolidWorks® processes

Use of standardized and describing XML format

For efficient, well structured data preparation in a time-controlled batch process

Efficient connection to ERP and PPS-systems

Ideal also for the generation of CNC data directly at the CNC machine, virtually in real time

Automatic preparation of drawings, including hard copy printout and eDrawings

Exchange of construction parts in assemblies with size modification

Complete integration in SolidWorks®

Directly connected to VariXPASCAM or **PASCAM WoodWorks** and **PASCAM Bea**

Report files on XML basis for feedback

Many basic adjustments directly controllable via control file; i.e. generation of model, etc.

### System requirements:

- SolidWorks® 2009 or later
- Windows XP (32-bit) or later

Sales partner:

